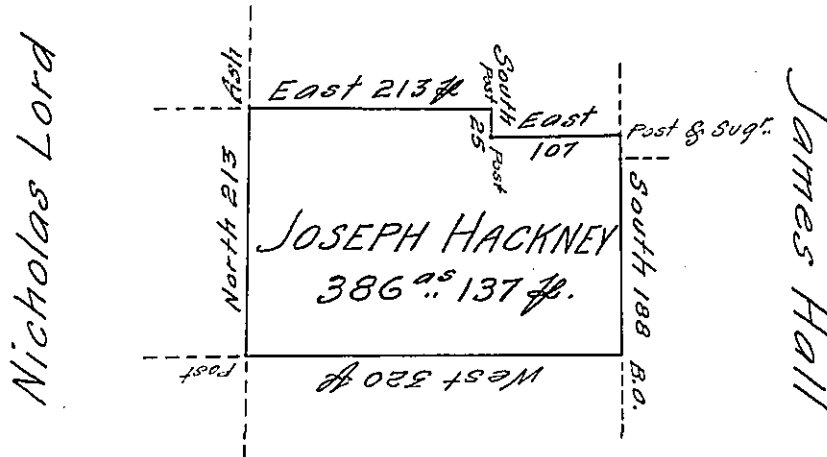


Luke Hill



Paul Hall

Situate on the East side of French Creek
 in Allegheny County Containing 386^{ac} 137^{sq} ft. and al-
 lowance of six $\frac{1}{2}$ Cent for Roads &c. Surveyed the
 15th day of June 1794 In pursuance of his Im-
 provement Bearing date the 20th day of Sep-
 tember 1793 —

W^m Power D^y Sr.

To Dan^l Brodhead Esq^r }
 Surveyor General }

IN TESTIMONY that the above is a copy of the original remaining on file in
 the Department of Internal Affairs of Pennsylvania, made
 conformably to an Act of Assembly approved the 16th day of
 February, 1833, I have hereunto set my Hand and caused
 the Seal of said Department to be affixed at Harrisburg,
 this Seventh day of August 1906

Lucas R. Brown
 Secretary of Internal Affairs.